

# National Emergency Management Organization

## *“Preserving Life and Property”*

### ADVISORY NO. 7 TROPICAL STORM NADINE MAKES LANDFALL

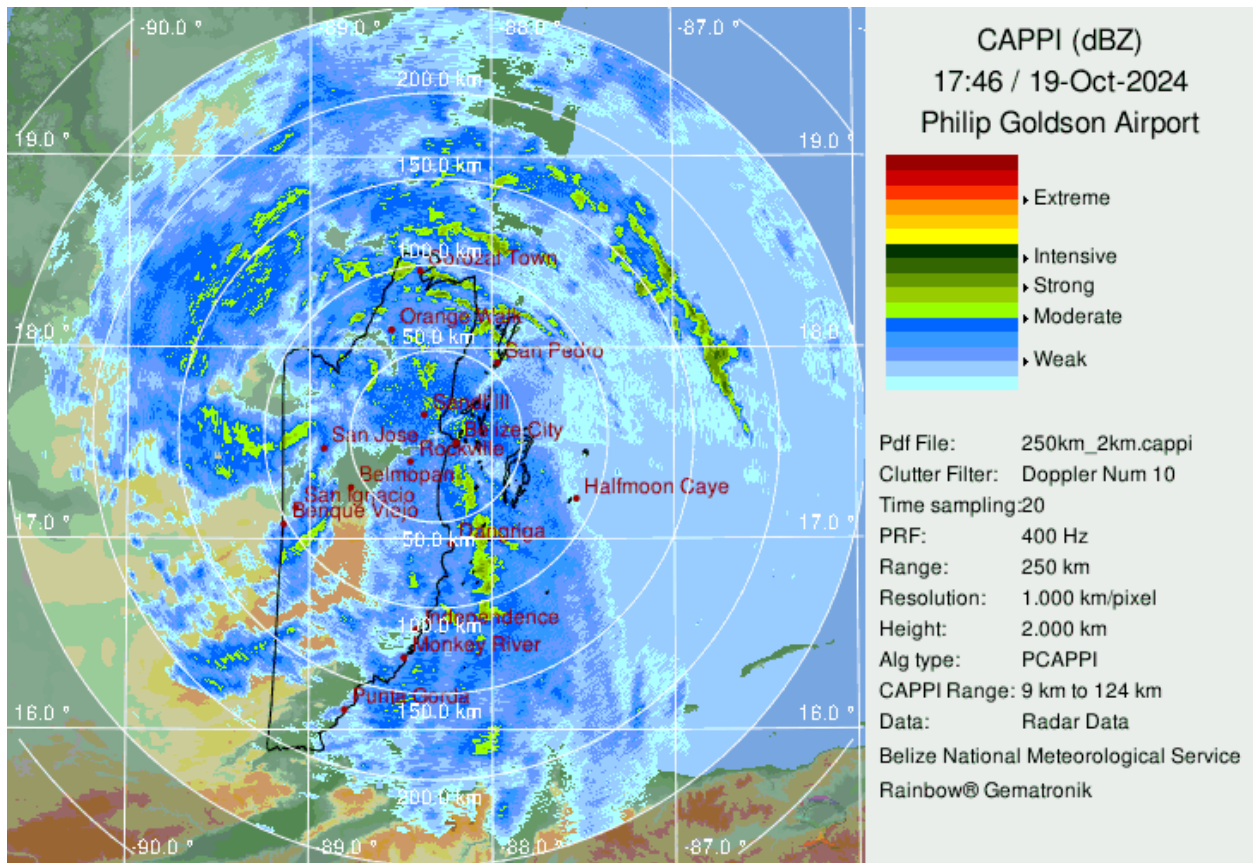
As at 12:00 PM, SATURDAY, 19TH OCTOBER, 2024

#### Update

Tropical Storm Nadine made landfall just south of Belize City at 10 am local time. However, Tropical Storm conditions continue to affect portions of the Corozal, Belize and Orange Walk Districts. A tropical Storm warning remains in effect from Belize City northward to the Border with Mexico. At 12pm local time, tropical storm Nadine was located near latitude 17.6N, longitude 88.5W or about 20 miles west-northwest of Belize City. Nadine was moving to the west at 8 mph with maximum sustained winds of 50 mph. A general westward motion is expected to continue for the remainder of today, taking Nadine further inland where it will continue to weaken.

The main threat from Nadine will continue to be heavy rainfall. Rainfall totals of 3 to 5 inches have already been recorded and an additional 2 to 4 inches are possible, especially over northern and central Belize. This will result in flooding. Strong gusty winds are producing rough sea conditions, and mariners are advised to remain in safe harbour until the winds have subsided. Strong gusty winds will persist mainly over the central and northern districts for the next 3 to 6 hours and these may result in some minor damage to weak structures.





In this case, a Tropical Storm Warning means that tropical storm conditions (sustained winds of 39 to 73 mph) are occurring over Belize. Take immediate action to protect life and property.

### Hazards Expected to Affect Belize

**Excess Rainfall** - Heavy rainfall (an additional 2-4 inches) is expected, especially over northern and central Belize. This can result in localized flooding within these districts.

**High Wind** – Winds of 50 miles per hour with higher gusts will occur within the impact area. This may result in damage to structures, crops, and trees.

Flood Alerts	Flood Warning
<ul style="list-style-type: none"> <li>a. Coastal Road from La Democracia to Hope Creek Junction</li> <li>b. San Ignacio Low level bridge and the Iguana Creek Bridge</li> <li>c. Sittee River and Surrounding Areas</li> </ul>	<ul style="list-style-type: none"> <li>● Urbanized flood warning is in effect for low lying areas in the Central and Northern parts of the country.</li> <li>● Riverine flood warning is in effect for rivers situated in the North of the country, Central and in the Mayan Mountains.</li> </ul>

**The National Emergency Management Organization (NEMO) urges residents of the Corozal, Belize, Orange Walk, and Cayo Districts to remain in shelter at this time.** All other districts should remain on high alert during this time.

- Businesses in the Corozal, Orange Walk and Belize Districts (including San Pedro and Caye Caulker) should remain closed as Tropical Storm Nadine passes Belize. Business owners are asked to ensure the safety of their employees.
- Essential services are to remain open in the Belize, Corozal and Orange Walk Districts, and in San Pedro and Caye Caulker. Essential Services are defined below.
- Family and business emergency plans must be put into action. Emergency food, water and medical supplies should be ready. Check on the elderly and people with disabilities, and safeguard your pets.
- Shelters will be opened in the Belize and Cayo Districts and San Pedro Town as needed. Listen closely to NEMO announcements in your districts for more information if you will need to seek shelter.
- Belize Port Authority has issued a Notice to Mariners ordering suspension of water taxis, safe mooring of vessels and safety of port facilities.

- The PGIA remains operational, however travelers are reminded that there may be delays.

Residents are advised to follow official information coming from NEMO and the Met Service. The National Emergency Operations Centre is activated and all District Emergency Operations centres in all districts are open and remain on alert. NEMO's hotline is 936.

NEMO takes all hydrometeorological hazards very seriously and we ask the public to do so as well. Let's work together to keep our community safe and prepared!

**:-End of Release**

## **ESSENTIAL SERVICES**

1. Security Forces
2. Medical personnel and auxiliary services (includes ambulance services)
3. Immigration and Customs
4. Private security services
5. Public utilities, workers and auxiliary staff
6. Social workers authorized to respond to emergencies
7. Sanitation workers and auxiliary staff
8. Productive sector industries, personnel and auxiliary workers (potable water production, agricultural workers)
9. Media (workers supporting television, radio, newspapers and online media services)
10. Belize Port Authority
11. Office of the Governor General
12. Belize Department of Civil Aviation
13. National Fire Service
14. Belize Electricity Limited
15. Belize Water Services Limited
16. Belize Telemedia Limited
17. Speednet Communication Limited (Smart)
18. Call Centres